

FOAM FACTORY

GLUCKSTADT, MISSISSIPPI

GREG AINSWORTH, ARCHITECT

66 Sandalwood
Madison, MS 39110
gregainsworth@att.net
601.856.9598



INDEX OF DRAWINGS

<u>DRAWING NO.</u>	<u>DRAWING DESCRIPTION</u>
X-1	COVER SHEET
C-1	SITE LAYOUT/UTILITY PLAN
C-2	SITE GRADING/DRAINAGE PLAN
C-3	SITE DETAILS
LA-1	SITE PLAN - LANDSCAPING
A-1	ELEVATIONS
A-2	ELEVATIONS

17 16
20 21

POINT OF COMMENCEMENT
FOUND PK NAIL IN PAVEMENT
NW CORNER SECTION 21 T8N-R2E
MADISON COUNTY, MS

CHURCH ROAD

CHURCH ROAD

CHURCH ROAD

CHURCH ROAD

SILVER LEAF HOLDINGS LLC
DEED BOOK 3251 PAGE 815
S 63°04'19" E 2349.78'

RONALD L. HUTCHINSON, ET UX
DEED BOOK 1986 PAGE 403
DEED BOOK 2949 PAGE 107

BELLSOUTH TELECOMMUNICATIONS

SANJAY KUMAR &
INDER K. ARORA
DEED BOOK 3261 PAGE 456

SANJAY KUMAR &
INDER K. ARORA
DEED BOOK 3152 PAGE 379

INTERSTATE NO. 55

NORTH POND LAND TRUST
1.80 Acres

WEST POND DRAINAGE BASIN
50.43 AC.

NORTH POND DRAINAGE BASIN
5.61 AC.

NORTH POND

WEST POND

CP6792
N=5209.52
E=5539.30
ELEV=288.46

10' DRAINAGE &
ACCESS EASEMENT
(RESERVED BY OWNERS)

7.5' DRAINAGE
EASEMENT
(RESERVED BY OWNERS)

7.5' DRAINAGE
EASEMENT
(RESERVED BY OWNERS)

10' DRAINAGE &
ACCESS EASEMENT
(RESERVED BY OWNERS)

3.85 Acres

4.16 Acres

NORTH POND DRAINAGE BASIN
10.14 AC.

NORTH POND

FUTURE SITE
5.07 Acres

UTILITY EASEMENT NO. 2
DEED BOOK 3400 PAGE 303

CP1000
N=4584.64
E=5418.22
ELEV=289.71

WEST POND

WEST POND DRAINAGE BASIN
12.56 AC.

UTILITY EASEMENT NO. 5
DEED BOOK 3400 PAGE 303

UTILITY EASEMENT NO. 6
DEED BOOK 3400 PAGE 303

WEST POND DRAINAGE BASIN
25.87 AC.

CHEVERLOT
5.01 Acres

INTERSTATE NO. 55

$\Delta = 17'48''10''$
 $R = 5622.43'$
 $D = 1'01''09''$
 $L = 1747.00'$
 $CH = N 14'15''02'' E$
 $1739.98'$

20.02'
10' DRAINAGE &
ACCESS EASEMENT
(RESERVED BY OWNERS)

10' DRAINAGE &
ACCESS EASEMENT
(RESERVED BY OWNERS)

WEST POND LAND TRUST
20.85 Acres

20.85 Acres
908189.0 Sq. Feet

EXISTING DITCH LINE

SET REFERENCE

PAULA LOONEY
DEED BOOK 2621 PAGE 498

SET REFERENCE

CALLAWAY HOLDINGS, LLC
DEED BOOK 3270 PAGE 619

UTILITY EASEMENT NO. 1
DEED BOOK 3400 PAGE 303

UTILITY EASEMENT NO. 3
DEED BOOK 3400 PAGE 303

UTILITY EASEMENT NO. 4
DEED BOOK 3400 PAGE 303

CP8847
N=3785.46
E=4986.31
ELEV=276.88

UTILITY EASEMENT NO. 5
DEED BOOK 3400 PAGE 303

10' DRAINAGE &
ACCESS EASEMENT
(RESERVED BY OWNERS)

15' DRAINAGE
EASEMENT
(RESERVED BY OWNERS)

20' DRAINAGE
EASEMENT
(RESERVED BY OWNERS)

S 89°36'20" W 583.81'

BEAR CREEK
0.13 Acres

EAST DITCH LAND TRUST
0.74 Acres

INTERSTATE NO. 55

AUTOBAHN LOOP

1.10 Acres
NORTH POND DRAINAGE BASIN
1.22 AC.

DRAINAGE BASIN RIDGE

PROPOSED 60' ROAD

AUTOBAHN LOOP

AUTOBAHN LOOP

AUTOBAHN LOOP

AUTOBAHN LOOP

6.48 Acres

3.32 Acres

1.20 Acres

S 66°42'16" E
230.68'

N 21°28'59" E
288.04'

S 21°28'59" W
288.04'

N 21°28'59" E
288.04'

S 66°42'16" E
230.68'

S 21°28'59" W
288.04'

N 21°28'59" E
288.04'

S 66°42'16" E
230.68'

S 21°28'59" W
288.04'

N 21°28'59" E
288.04'

S 66°42'16" E
230.68'

S 21°28'59" W
288.04'

N 21°28'59" E
288.04'

S 66°42'16" E
230.68'

S 21°28'59" W
288.04'

N 21°28'59" E
288.04'

S 66°42'16" E
230.68'

S 21°28'59" W
288.04'

N 21°28'59" E
288.04'

S 66°42'16" E
230.68'

S 21°28'59" W
288.04'

N 21°28'59" E
288.04'

S 66°42'16" E
230.68'

S 21°28'59" W
288.04'

N 21°28'59" E
288.04'

S 66°42'16" E
230.68'

S 21°28'59" W
288.04'

N 21°28'59" E
288.04'

S 66°42'16" E
230.68'

S 21°28'59" W
288.04'

N 21°28'59" E
288.04'

S 66°42'16" E
230.68'

S 21°28'59" W
288.04'

N 21°28'59" E
288.04'

S 66°42'16" E
230.68'

S 21°28'59" W
288.04'

N 21°28'59" E
288.04'

S 66°42'16" E
230.68'

S 21°28'59" W
288.04'

N 21°28'59" E
288.04'

S 66°42'16" E
230.68'

S 21°28'59" W
288.04'

N 21°28'59" E
288.04'

S 66°42'16" E
230.68'

S 21°28'59" W
288.04'

N 21°28'59" E
288.04'

S 66°42'16" E
230.68'

S 21°28'59" W
288.04'

N 21°28'59" E
288.04'

S 66°42'16" E
230.68'

S 21°28'59" W
288.04'

N 21°28'59" E
288.04'

S 66°42'16" E
230.68'

S 21°28'59" W
288.04'

N 21°28'59" E
288.04'

S 66°42'16" E
230.68'

S 21°28'59" W
288.04'

N 21°28'59" E
288.04'

S 66°42'16" E
230.68'

S 21°28'59" W
288.04'

N 21°28'59" E
288.04'

S 66°42'16" E
230.68'

S 21°28'59" W
288.04'

N 21°28'59" E
288.04'

S 66°42'16" E
230.68'

S 21°28'59" W
288.04'

N 21°28'59" E
288.04'

S 66°42'16" E
230.68'

S 21°28'59" W
288.04'

N 21°28'59" E
288.04'

S 66°42'16" E
230.68'

S 21°28'59" W
288.04'

N 21°28'59" E
288.04'

S 66°42'16" E
230.68'

S 21°28'59" W
288.04'

N 21°28'59" E
288.04'

S 66°42'16" E
230.68'

S 21°28'59" W
288.04'

N 21°28'59" E
288.04'

S 66°42'16" E
230.68'

S 21°28'59" W
288.04'

N 21°28'59" E
288.04'

S 66°42'16" E
230.68'

S 21°28'59" W
288.04'

N 21°28'59" E
288.04'

S 66°42'16" E
230.68'

S 21°28'59" W
288.04'

N 21°28'59" E
288.04'

S 66°42'16" E
230.68'

S 21°28'59" W
288.04'

N 21°28'59" E
288.04'

S 66°42'16" E
230.68'

S 21°28'59" W
288.04'

N 21°28'59" E
288.04'

S 66°42'16" E
230.68'

S 21°28'59" W
288.04'

N 21°28'59" E
288.04'

S 66°42'16" E
230.68'

S 21°28'59" W
288.04'

N 21°28'59" E
288.04'

S 66°42'16" E
230.68'

S 21°28'59" W
288.04'

N 21°28'59" E
288.04'

S 66°42'16" E
230.68'

S 21°28'59" W
288.04'

N 21°28'59" E
288.04'

S 66°42'16" E
230.68'

S 21°28'59" W
288.04'

N 21°28'59" E
288.04'

S 66°42'16" E
230.68'

S 21°28'59" W
288.04'

N 21°28'59" E
288.04'

S 66°42'16" E
230.68'

S 21°28'59" W
288.04'

N 21°28'59" E
288.04'

S 66°42'16" E
230.68'

S 21°28'59" W
288.04'

N 21°28'59" E
288.04'

S 66°42'16" E
230.68'

S 21°28'59" W
288.04'

N 21°28'59" E
288.04'

S 66°42'16" E
230.68'

S 21°28'59" W
288.04'

N 21°28'59" E
288.04'

S 66°42'16" E
230.68'

S 21°28'59" W
288.04'

N 21°28'59" E
288.04'

S 66°42'16" E
230.68'

S 21°28'59" W
288.04'

N 21°28'59" E
288.04'

S 66°42'16" E
230.68'

S 21°28'59" W
288.04'

N 21°28'59" E
288.04'

S 66°42'16" E
230.68'

S 21°28'59" W
288.04'

N 21°28'59" E
288.04'

S 66°42'16" E
230.68'

S 21°28'59" W
288.04'

N 21°28'59" E
288.04'

S 66°42'16" E
230.68'

S 21°28'59" W
288.04'

N 21°28'59" E
288.04'

S 66°42'16" E
230.68'

S 21°28'59" W
288.04'

N 21°28'59" E
288.04'

S 66°42'16" E
230.68'

S 21°28'59" W
288.04'

N 21°28'59" E
288.04'

S 66°42'16" E
230.68'

S 21°28'59" W
288.04'

N 21°28'59" E
288.04'

S 66°42'16" E
230.68'

S 21°28'59" W
288.04'

N 21°28'59" E
288.04'

S 66°42'16" E
230.68'

S 21°28'59" W
288.04'

N 21°28'59" E
288.04'

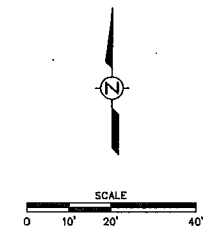
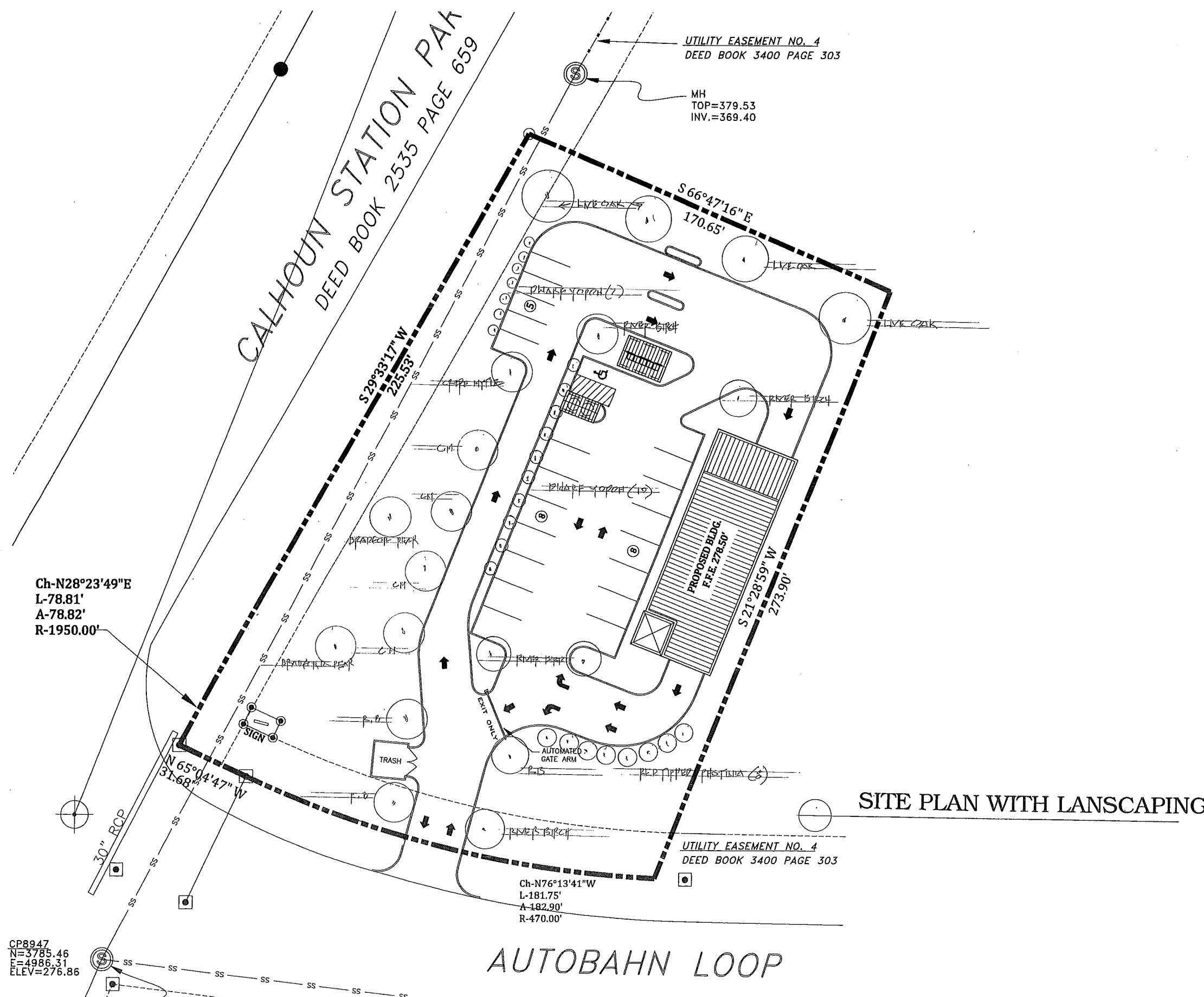
S 66°42'16" E
230.68'

S 21°28'59" W
288.04'

N 21°28'59" E
288.04'

S 66°42'16" E
230.68'

S 21°28'59" W
288.04'



SITE PLAN WITH LANSCAPING

FOAM FACTORY

Ch-N28°23'49"E
L-78.81'
A-78.82'
R-1950.00'

UTILITY EASEMENT NO. 4
DEED BOOK 3400 PAGE 303

MH
TOP=379.53
INV.=369.40

S 66°47'16" E
170.65'

CALHOUN STATION PAK
DEED BOOK 2535 PAGE 659

S 29°33'17" W
225.53'

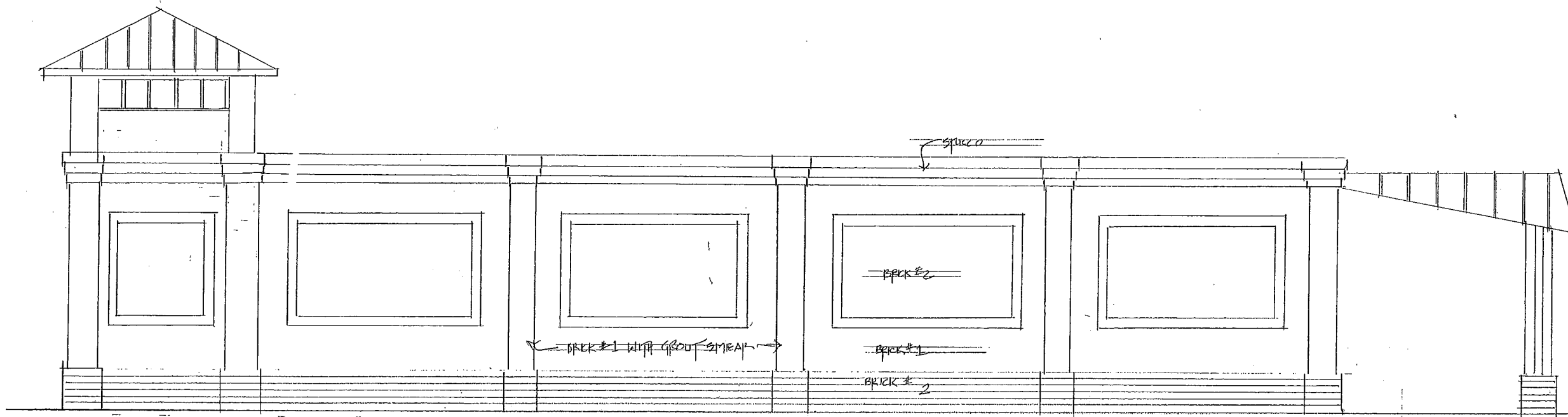
S 21°28'59" W
273.90'

UTILITY EASEMENT NO. 4
DEED BOOK 3400 PAGE 303

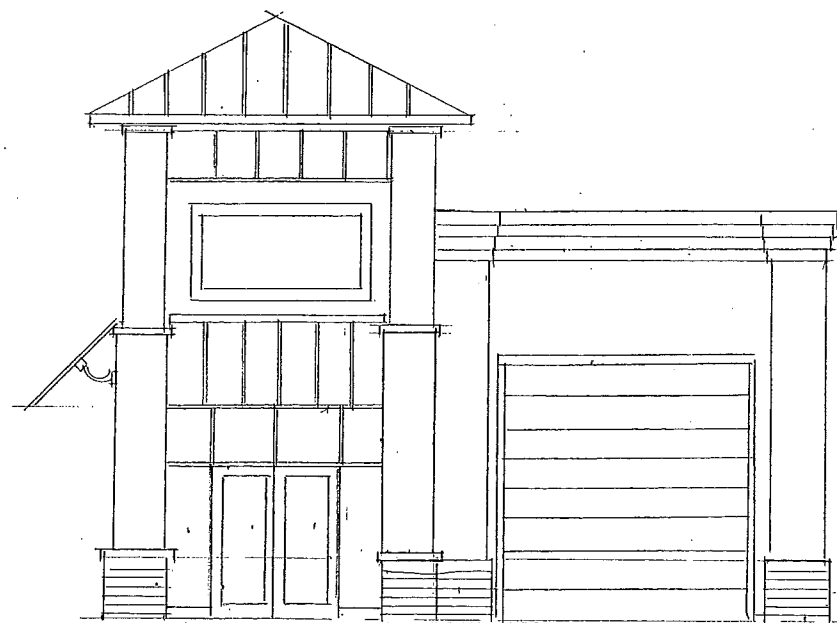
Ch-N76°13'41"W
L-181.75'
A-182.90'
R-470.00'

AUTOBAHN LOOP

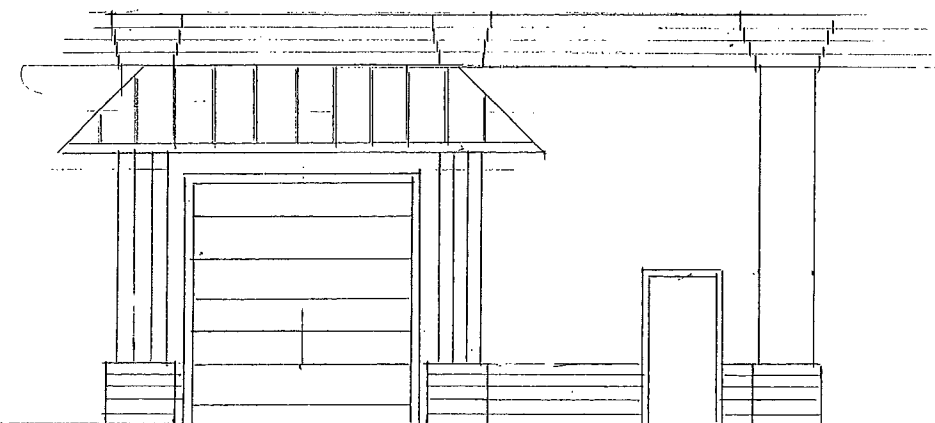
CP8947
N=3785.46
E=4986.31
ELEV=276.86



WEST ELEVATION



SOUTH ELEVATION



NORTH ELEVATION

REVISIONS	BY

FOAM FACTORY

DRAWN
CHECKED
DATE
SCALE
JOB NO.
SHEET
OF SHEETS